



Leveraging AI and Big Data Analytics for Smart Logistics

Adopting next generation Linehaul Planning
for your Business

Presentation by David Torosyan

Account Manager Post and Parcel, Transmetrics

Transmetrics in a nutshell

Transmetrics

- SaaS engine exclusively for Transport & Logistics;
- Applying AI, big data, and predictive analytics to super-charge planning;

Team

- Management team with transport background and repeat entrepreneurs;
- Experienced and growing team of 45 professionals (70+ % technical);

Strengths

- Combination of Data Science, IT & Logistics / Transportation background;
- Product designed specifically for optimizing logistics networks flows;
- Advanced BI, Granular Demand Forecasting, Tactical & Strategic Logistics Planning;
- Successful software implementations with some of the largest T&L companies;

Proven Commercial Success



KUEHNE+NAGEL

NileDutch
THE AFRICA CONNECTION



dpd



Matson®

samskip



Current Industry Challenges



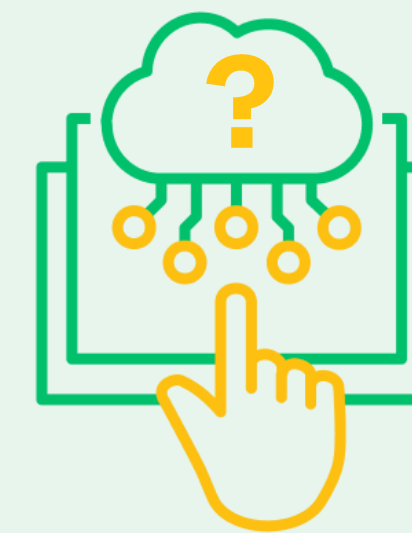
Highly competitive landscape and increasing service level expectations (Amazon, marketplaces)



There is a lot of uncertainty about the market conditions (Covid, inflation, labor shortages, etc.)



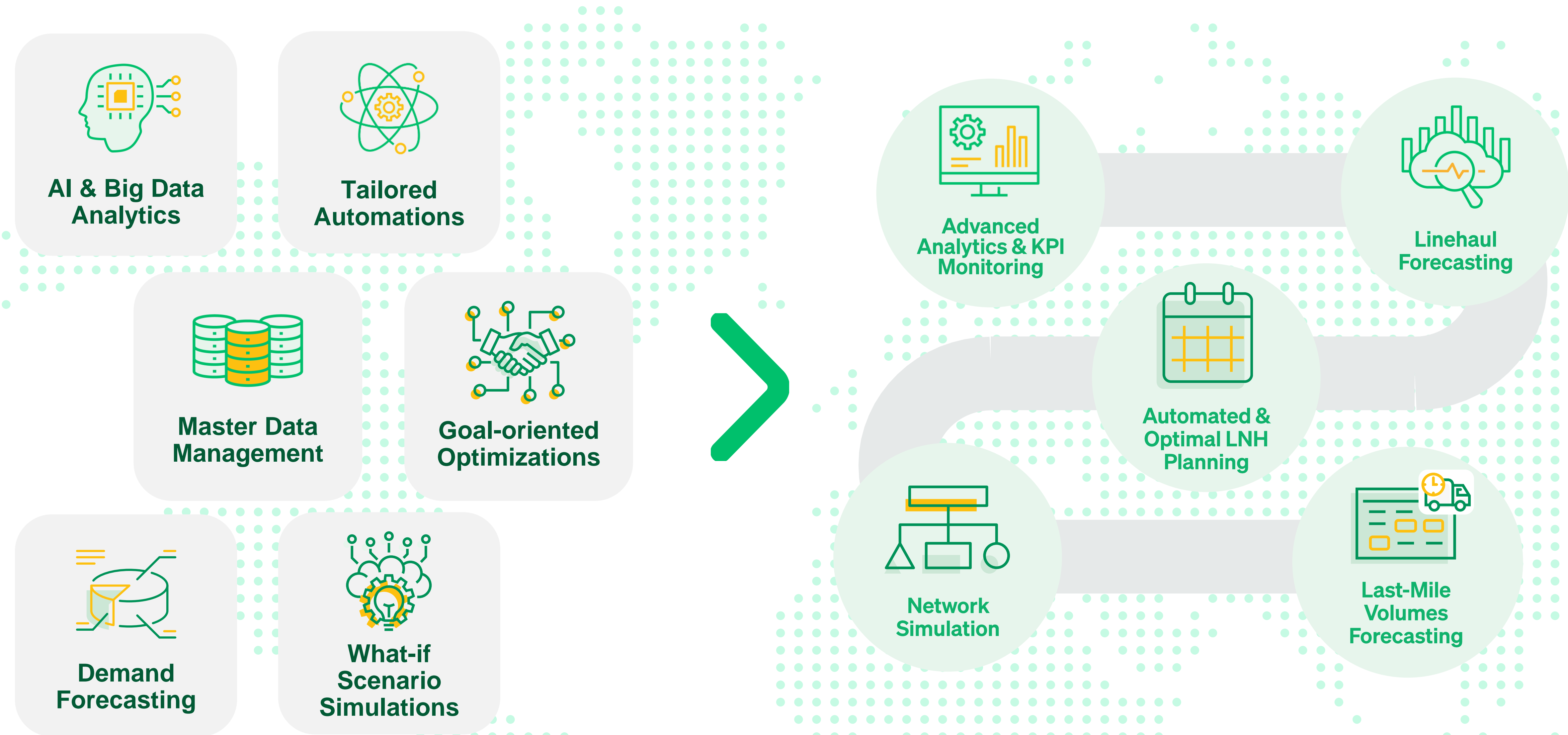
Characterized by single digit margins



High volatility and peaks in demands are combined with unpredictable events making optimal planning extremely difficult

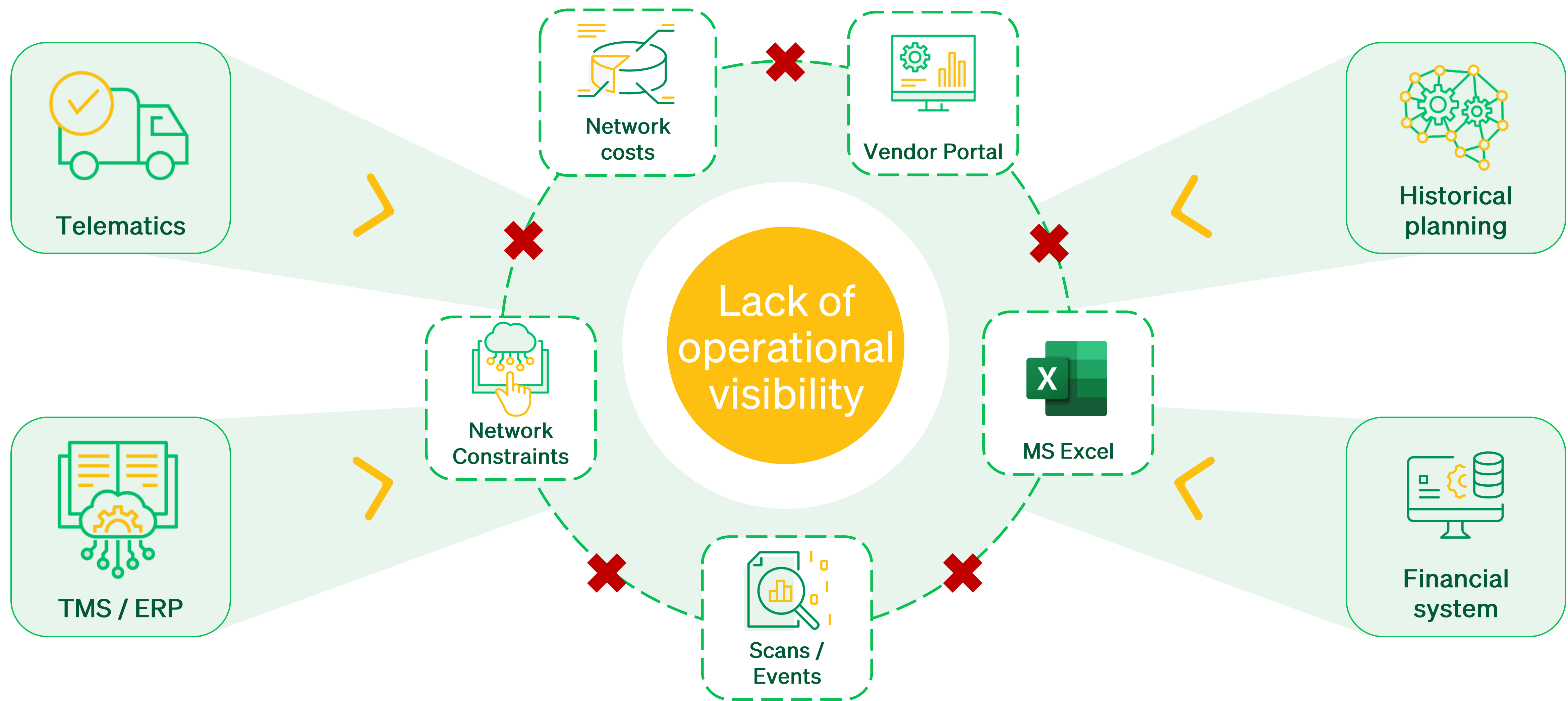
Linehaul Planning 4.0

Technologies translated into modules that ensure the successful achievement of linehaul network transformation goals



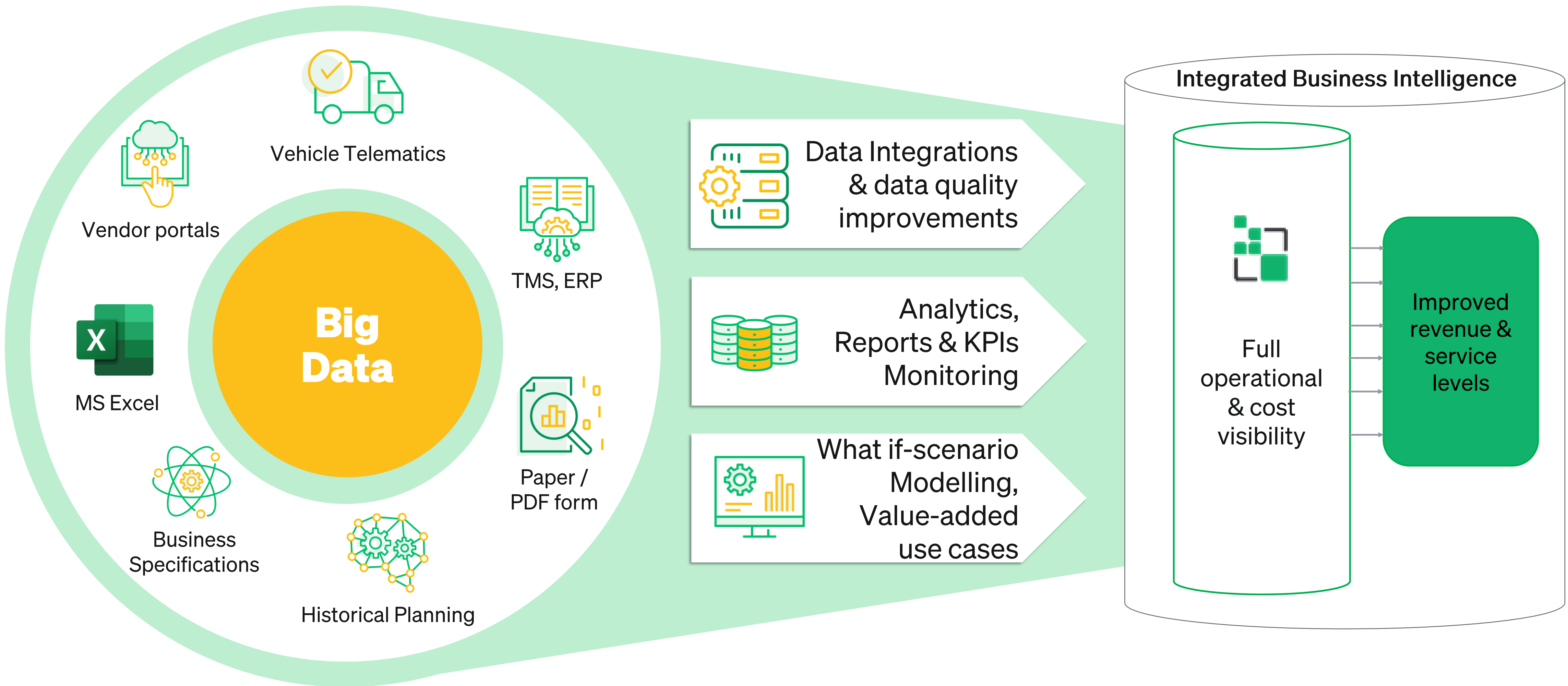
Industry landscape

A lot of barely connected systems and questionable data quality.



Complex Technological Landscape

Leveraging multiple data sources, complex integrations, etc.



Analytics & KPI Monitoring

Strategic and Tactical Business KPI Monitoring that allows to analyze past performance and monitor daily operations

- Customer / lane / tour profitability;
- Precise linehaul utilization;
- Planned vs. Executed monitoring;
- Cross dock utilization / efficiency;
- KPIs on productivity;
- Customer service levels.

Success story: Top 5 EU forwarder



Solution

- Data standardization using canonical data model;
- Precise reconciliation vs. financial reports / P&L / Telematics;



Result

- Operational savings in real-life context;
- Full network operational & cost visibility.



Linehaul Forecasting

Forecast demand and leverage this data for optimal capacity planning / purchasing.

- Forecasts the number of trucks from A to B on a daily basis
- Provides visibility on transport capacity needs days / weeks in advance

Success story: DPD



Solution

- Linehaul Planning software used daily since 2016;
- Precisely measuring truck capacity utilization and suggesting the number of trucks / route to plan across the network.



Result

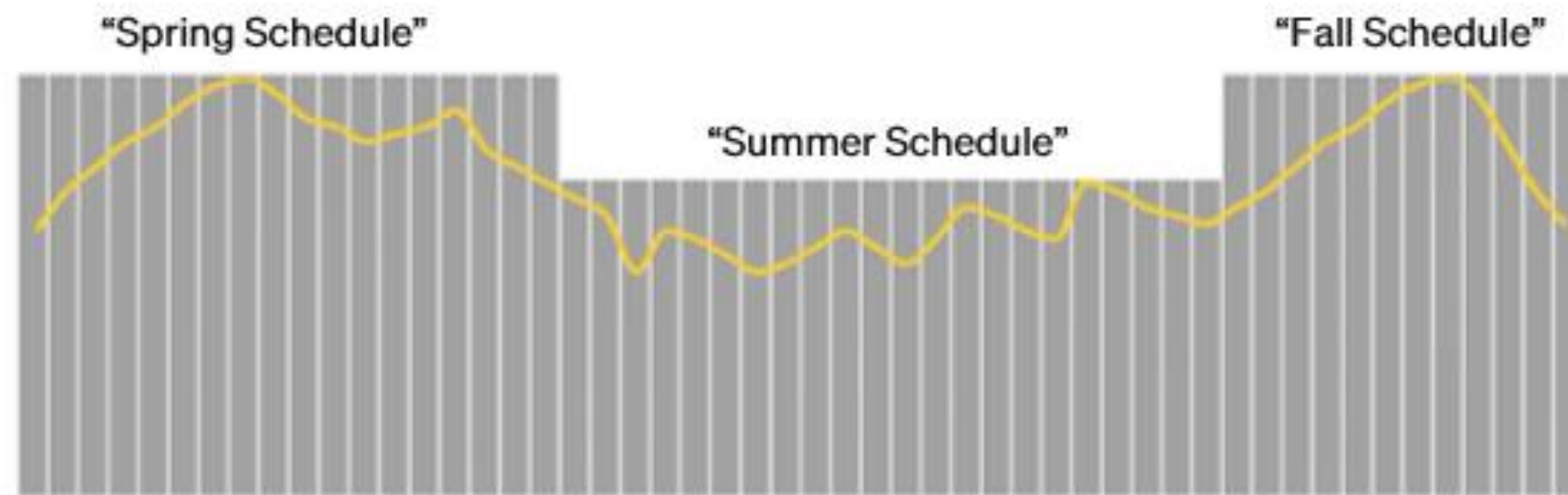
- Reduction of total transport cost by 7-9%
- Increase of capacity utilization of trucks by 10%+

Tools to gain planning efficiency

By aligning supply and demand

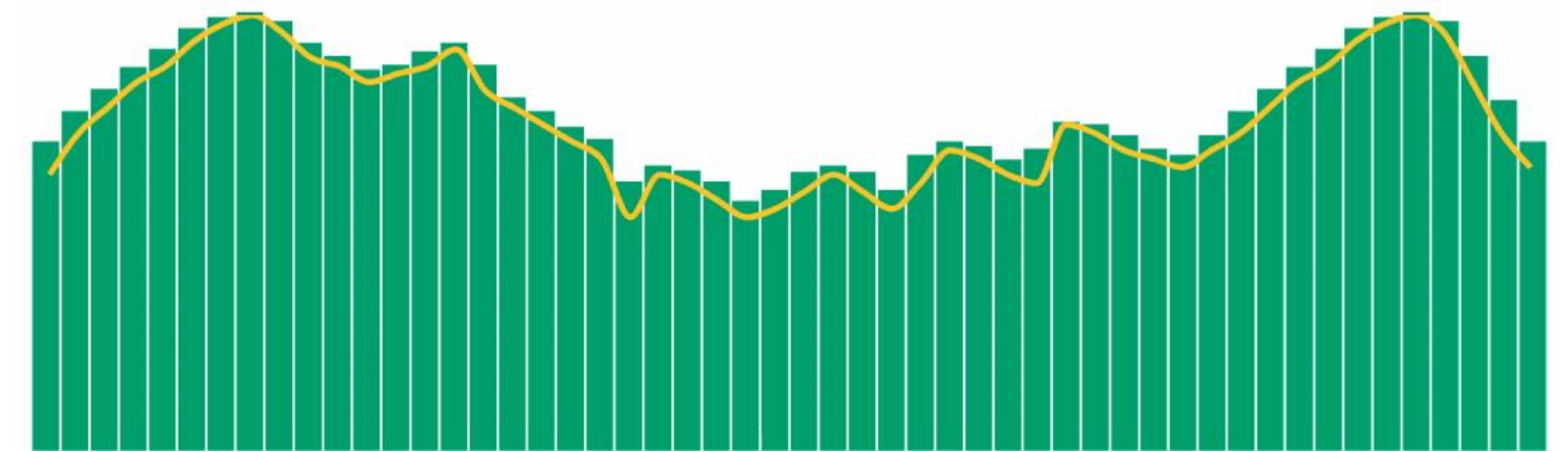
NOW:

Transporters rarely adjust their capacity / resources



WITH ARTIFICIAL INTELLIGENCE:

Predictive, agile tactical management



**Transition from static plans and gut feeling
to precise agile resource planning with AI**

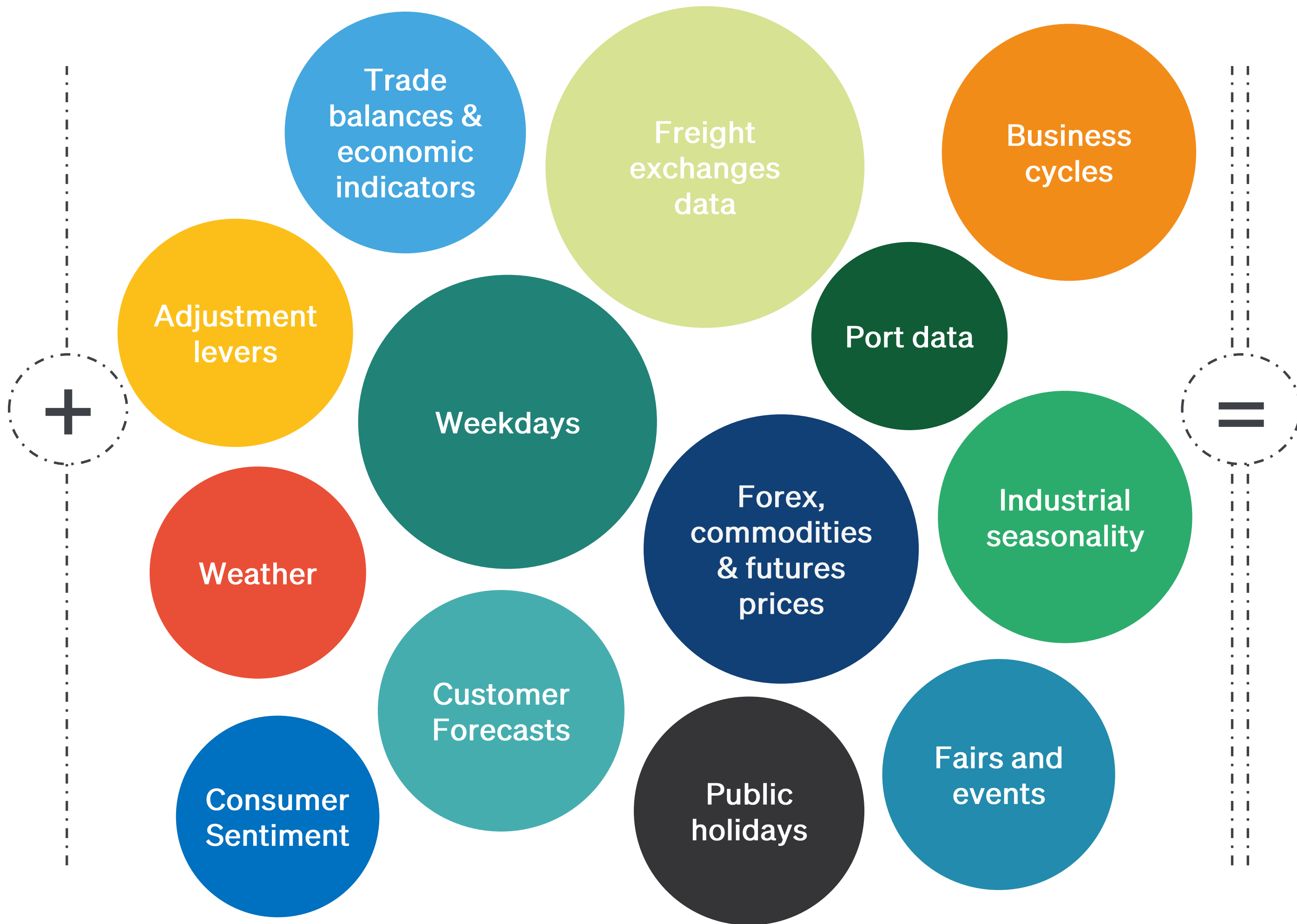
Multi-variate demand forecast

To achieve an optimal plan tailored to every day / week

Historical Data



- Shipments
- Consolidations
- Linehauls
- Customers
- Events



Demand Forecast

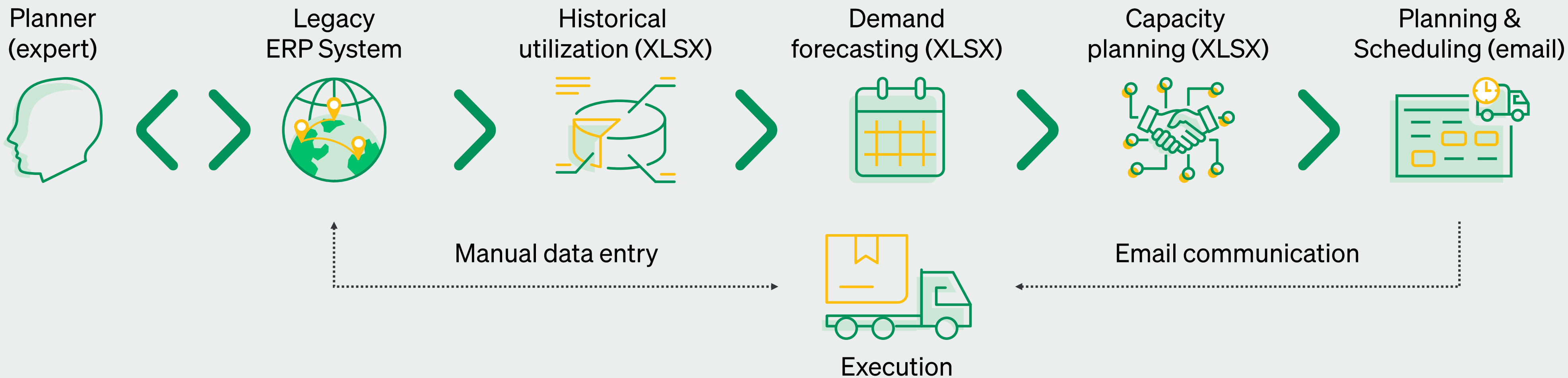


Align supply & demand
for optimal linehaul
planning

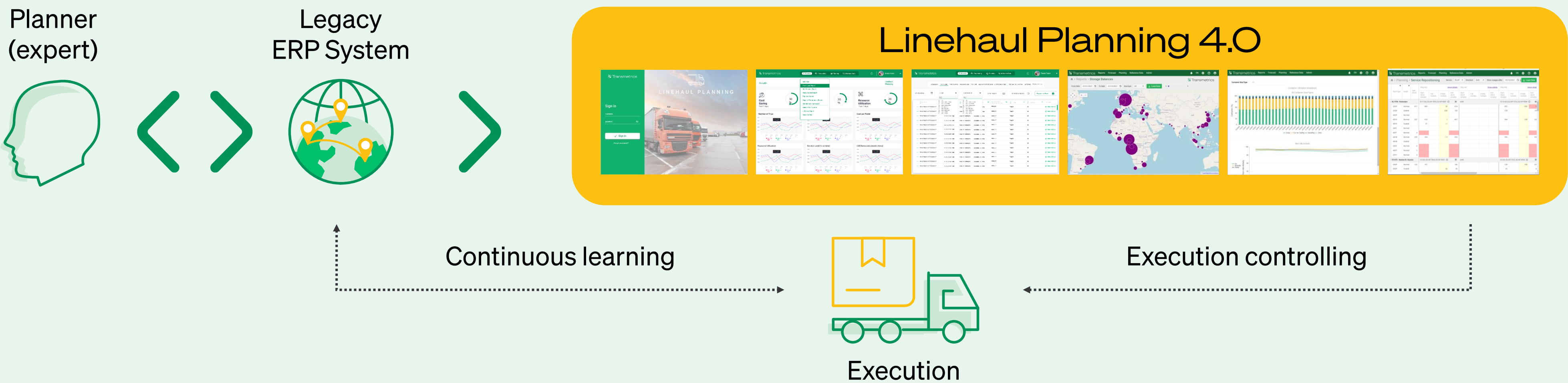
AI automates Linehaul Planning

Bringing multi-million EUR efficiency savings

Today's LSP planning:
manual process



Integrated
planning
with AI

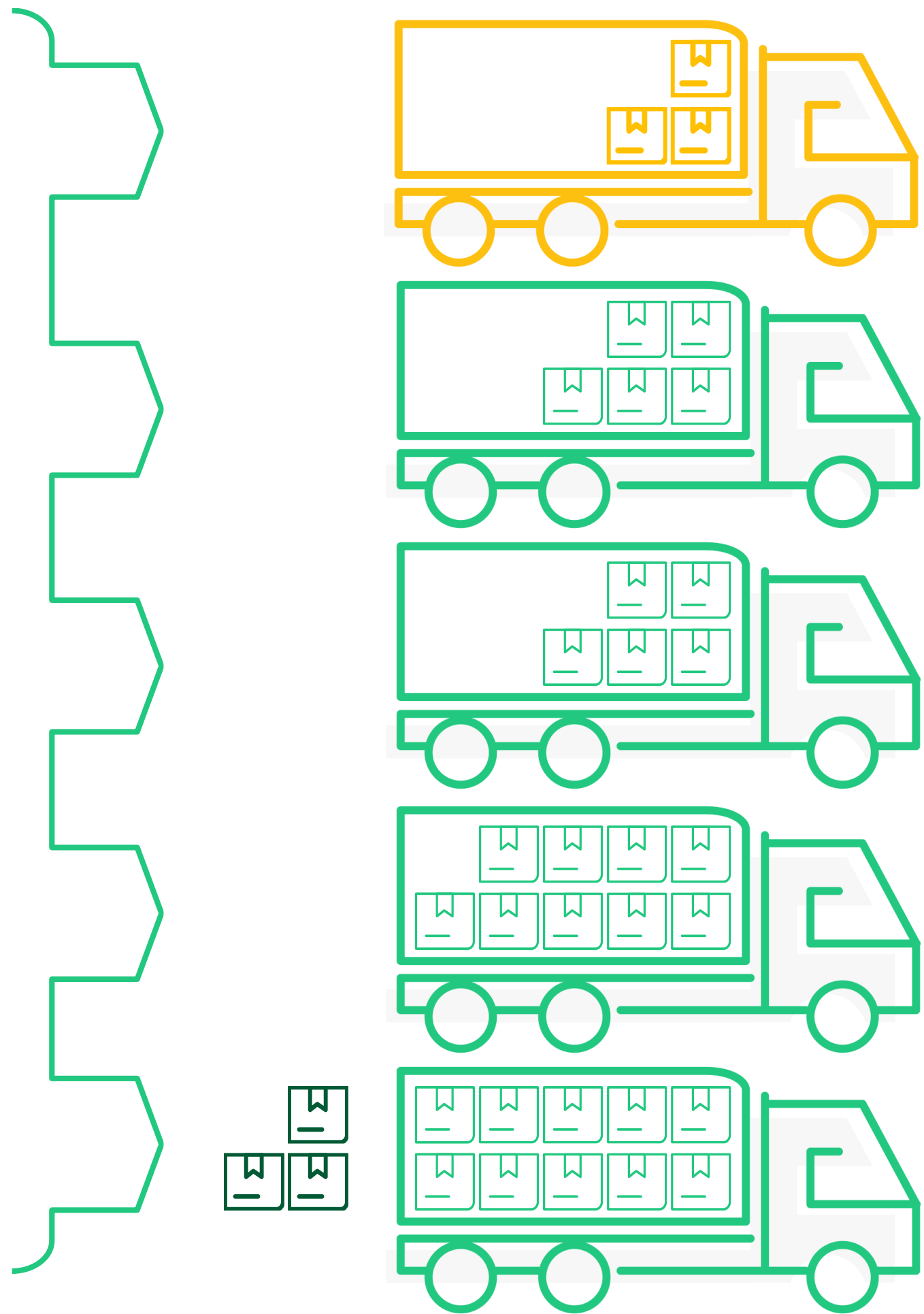


Efficient consolidation management

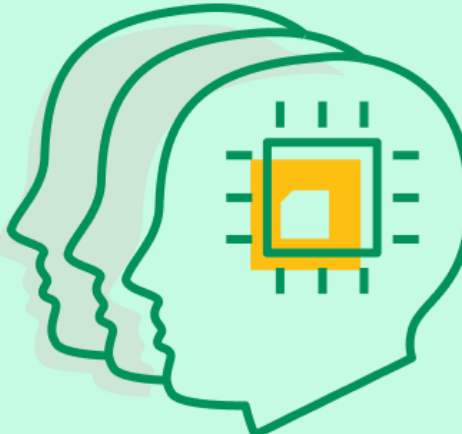
Resulting in less linehauls and higher utilization

Default schedule + routing
Same for every day

Terminal Departing Linehauls



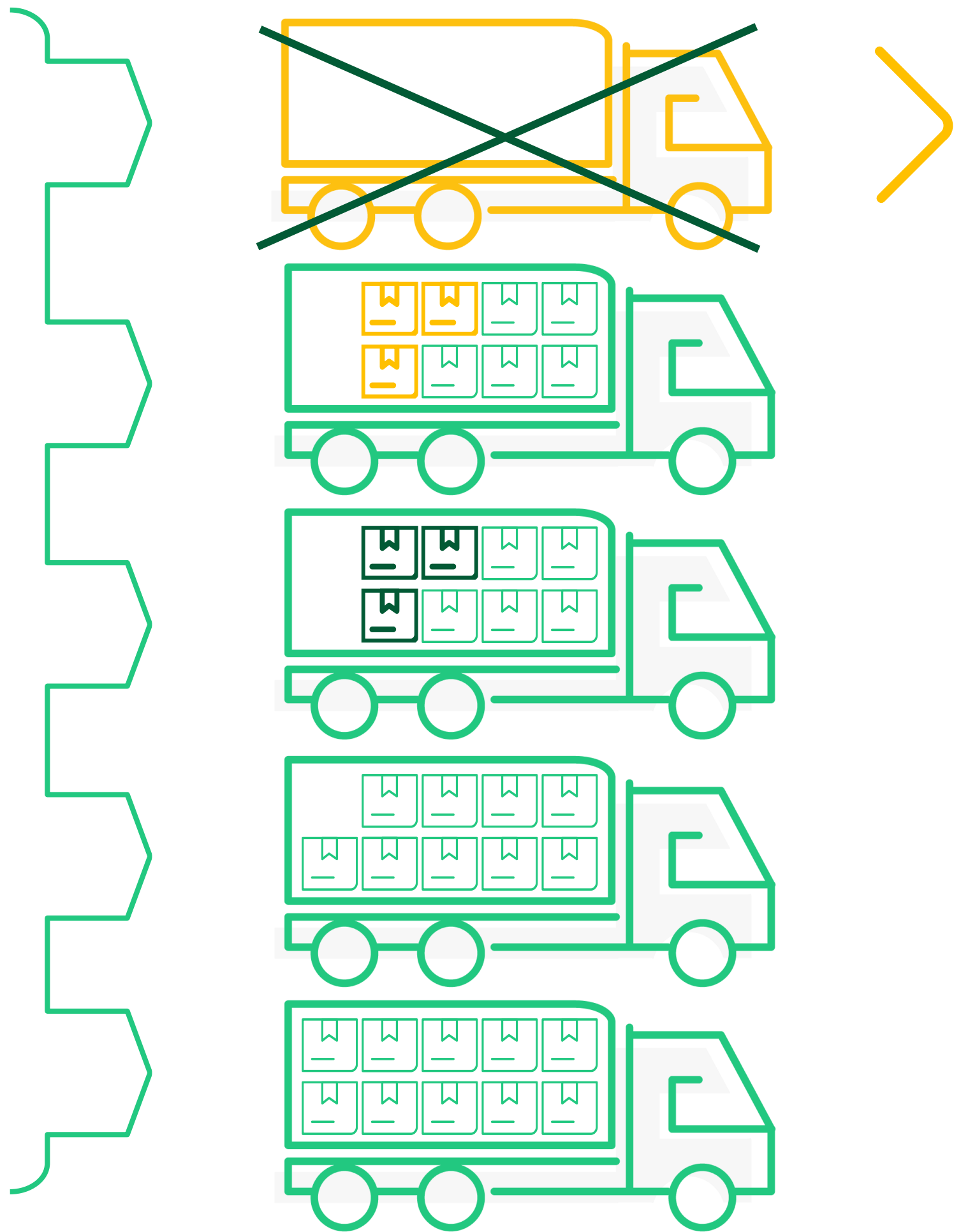
AI-powered
Logistics
Optimization
Engine



Simple decisions
on the outside –
complex AI on the
inside to make
them optimal.

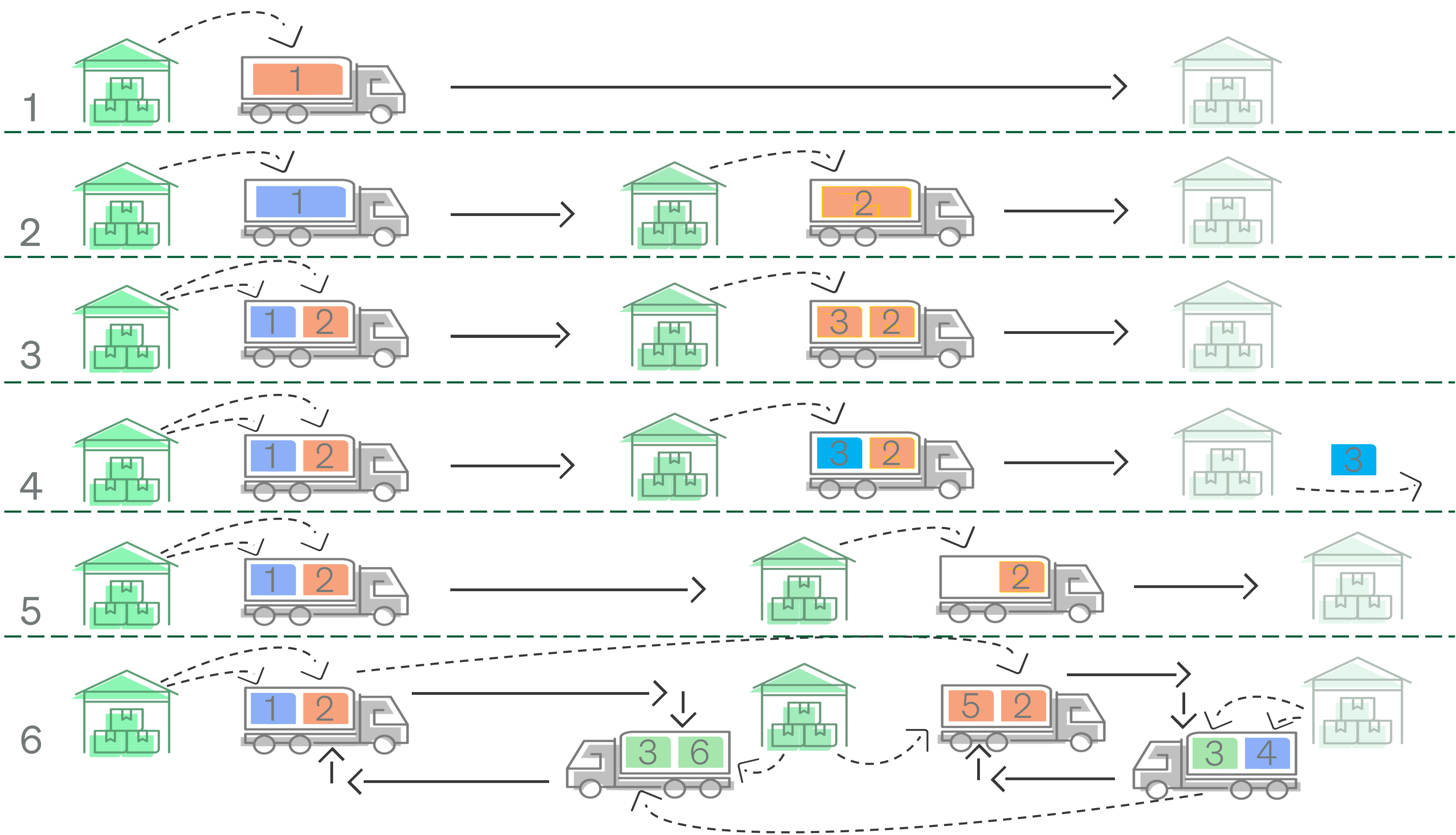
Optimized schedule + routing
Tailored for the specific day

Terminal Departing Linehauls



Dynamic routing

Utilizes complex rotations to reduce logistics cost in the complex networks



... and
many more
possible

Augmented Intelligence

The best of both worlds

AI

- Repetitive, tedious work
- Unbiased prediction
- Data cleansing and enrichment
- Fall-back decisions



Planner

- Experience
- Customer knowledge
- Market knowledge
- Vital for predictions in case of unreliable data



Last-mile Forecasting

Increase resource utilization by accurately forecasting last-mile volumes per location for short-term planning

- High forecasting accuracy for next day allows for the most efficient last-mile planning;
- Decrease the amount of subcontractor vehicles used to facilitate next-day deliveries;
- 3-5 days forecasting can improve the efficiency even further.

Success story: Gebrüder Weiss



Solution

- Predicting the exact number of last-mile delivery shipments for optimal courier planning;



Result

- Forecasting accuracy: 96+%;
- Increased service levels, improved courier capacity planning.

Simulations

Network modelling and redesign

Allowing to simulate with different network parameters to plan for future peak periods, test network resilience, build disaster recovery plans, etc.

- Demand
- Enable / disable location(s)
- Limit throughput capacity
- Routing
- Service levels

Success Story: DB Schenker



Solution

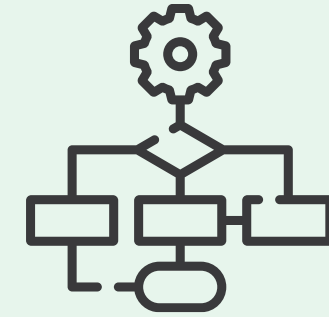
- Performing network simulations with different parameters, measure impact on key KPIs such as utilization, service levels, cost per shipment, etc.



Result

- 10%+ cost savings on daily operation costs.

Planning modes & scenario simulation



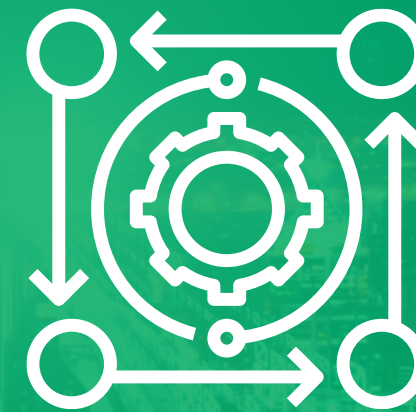
Tactical

- Create LNH schedules for low/high volume periods;



Strategic

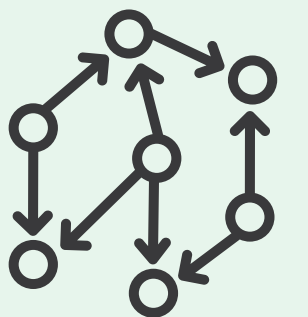
- Simulate network with different parameters for future periods
- Test network resilience;
- Build disaster recovery plans, etc.



Most reliable and robust scenario simulations

Check the effect of different scenarios on your KPIs (utilization, cost per shipment, service levels, etc.)

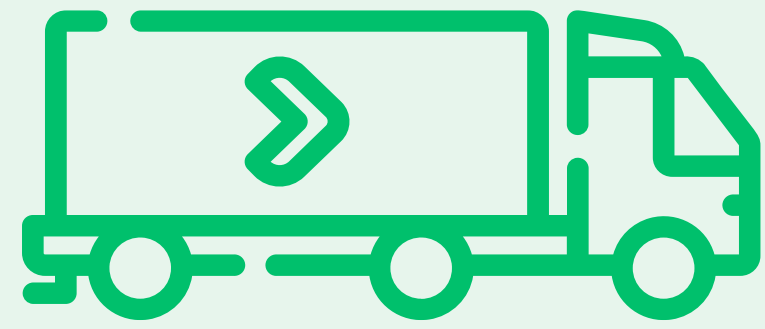
Operational (daily)



- Build daily / weekly plan;
- Simulate execution scenarios and pick the best plan.

Quick Wins

Adopting Linehaul Planning 4.0 allows your company to achieve efficiency and cost savings of **up to:**



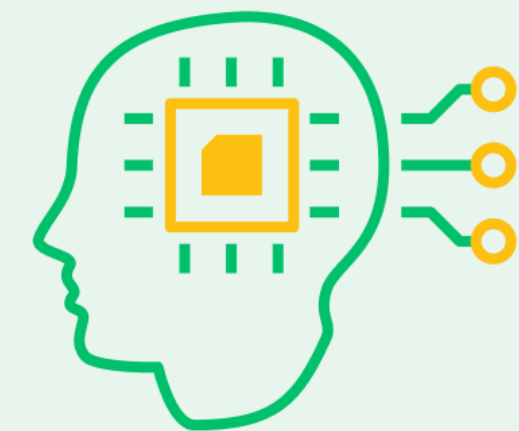
14%
capacity
utilization



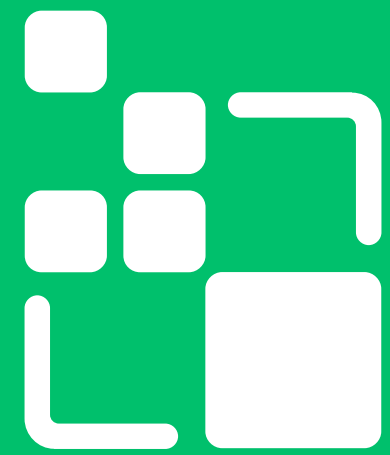
10% LNH
cost improvement



90%+
forecasting
accuracy



80%
process
automation



Transmetrics

Thank you!
Any questions?

David Torosyan

Account Manager Post and Parcel

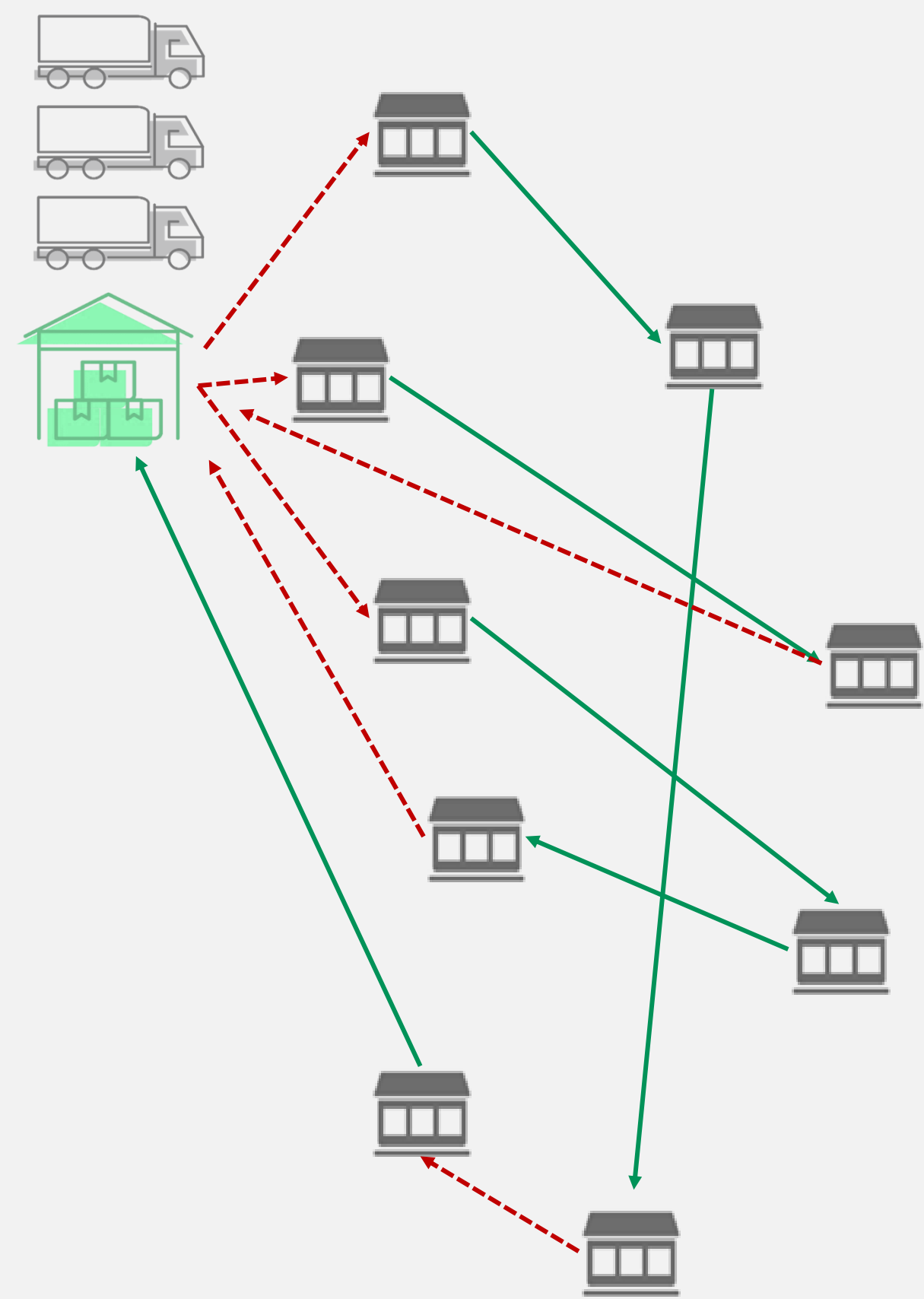
david.torosyan@transmetrics.eu

Optimal Resource Planning Powered by Big Data and AI

Predicting demand and suggesting the optimal supply + plan

Data cleansing and enrichment

Past data - Unoptimized situation



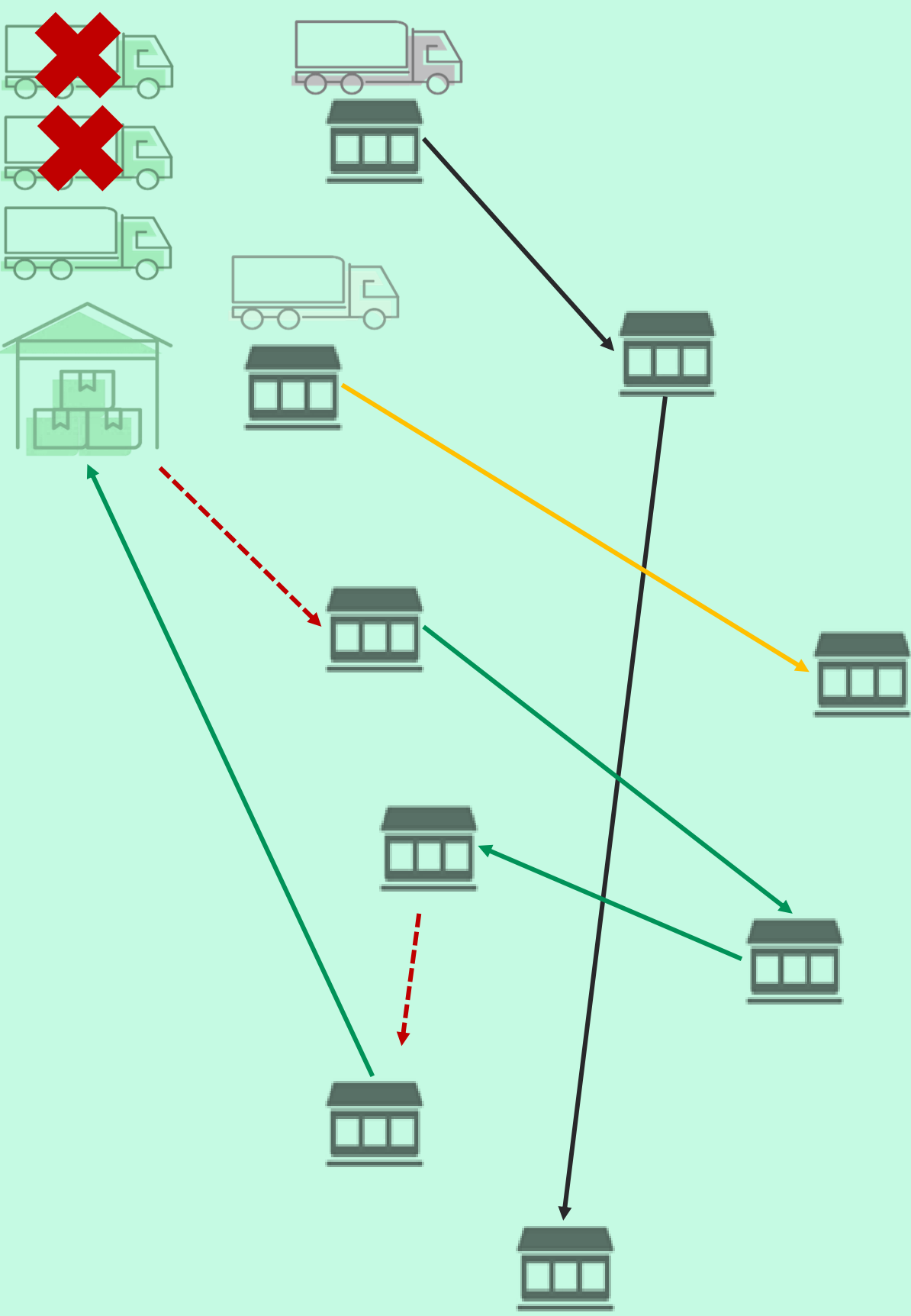
Demand forecast modelling

Short – term demand forecast



Logistics optimization

Resource plan for next week(s): optimized vs. expected demand



Customer Testimonials



Nicholas Minde

Senior Vice President
Overland Germany



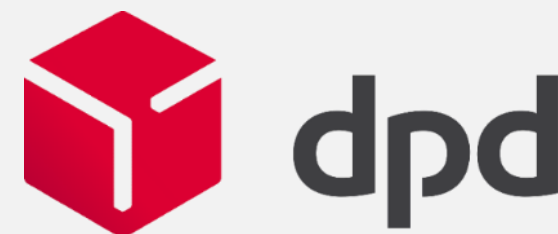
“The main key differentiator for me is that unlike other AI/Big Data companies, Transmetrics understand the realities of the logistics industry.”

Transmetrics apply mathematics, statistics and AI algorithms to create a product that makes sense for us, logistics experts, and which can be used in our daily operations to actually benefit our business.”



Danail Danailov

Board Member

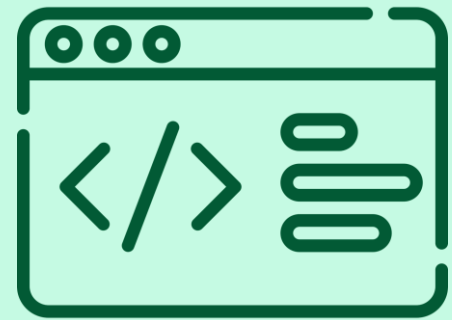


“With the Transmetrics’ application, the benefits are very visible. Before using Transmetrics’ solution, the rate of fleet utilization was 72%. Currently, we have above 82% [utilization] and we are expecting this to increase.

We estimate the total cost reduction at 7-9%, which is a great result for us.”

Platform & infrastructure

Built for the future



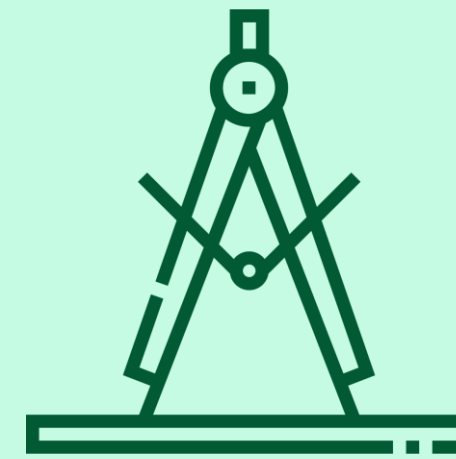
Single code base

Built in-house from day 1,
deployed globally.



Hyper secure

State-of-the-art
encryption and security,
ISO 27001 certified.



Precise

Backed by IBM's high
performance machine
learning algorithm, Watson.



Agile

Continuous innovation, capable
of adapting to rapidly changing
industry standards.

Daily learning AI loop

Ensures planning always relies on latest data

